

Installation guide (Windows PC)

System requirements

For the installation of the Carrera track planner from www.autorennbahnplaner.de the following minimum system requirements have to be fulfilled:

OS: Microsoft® Windows® XP or higher (compatible with Microsoft® Windows® 8)
Processor: Intel® Pentium or higher
Memory: 64 MB RAM,
Disk space: 4,0 MB,
Screen resolution: 1280 x 720 Pixel.

The latest version of the Autorennbahnplaner is an Adobe® AIR™ based application. For installing and running the Autorennbahnplaner you will have to install the Adobe® AIR™ runtime first. You can download the runtime directly from Adobe® by the following link:

<http://get.adobe.com/air/>

if it is not yet installed on your computer.

Download of the setup file

Please download the „autorennbahnplanerNG.exe“ from:
www.autorennbahnplaner.de/autorennbahnplanerNG.exe.

There is just one setup file for trial- and full version. Both versions (trial- and full version) are identical. In the trial „mode“ there is a limitation of 20 parts to be set. The limitation of 20 parts in the trial version can be removed by entering the personal license key.

The license key can be ordered at www.autorennbahnplaner.de. There you will also find upcoming patches, which are free of charge for registered users.

New versions will be offered with a significant discount for a period of 3 month after their first release to all registered users.

After the download of the „autorennbahnplanerNG.exe“ the installation can be started by a left double click on the autorennbahnplanerNG.exe setup file.

Installation

After starting the autorennbahnplanerNG.exe setup by a left double click the installation program will guide you through the installation process:

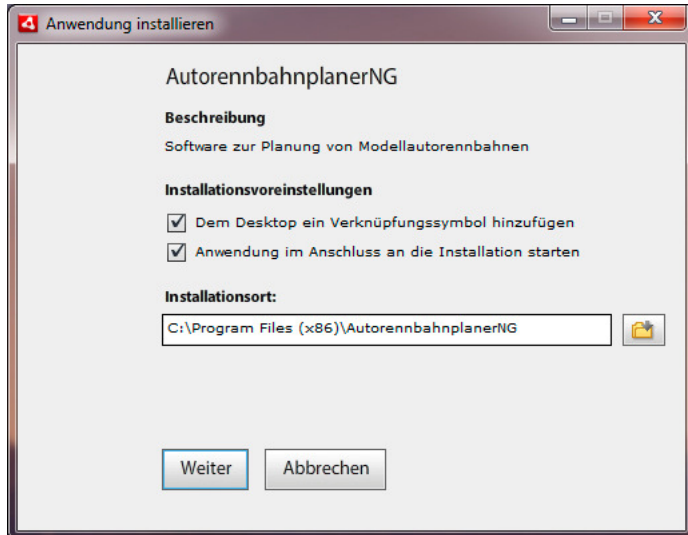


Diagram 1: Installation program

Within the installation dialog you can choose the installation directory and decide whether the installation guide should place a desktop icon and whether you would like to start the application right after the installation process has finished.

The default installation path for Microsoft Windows® is:
C:\Program Files\AutorennbahnplanerNG

Based on the security settings of your system, the OS might ask you to confirm the start of the installation.

After the confirmation a progress bar will show the current status of the installation.

After the installation is completed the application can be started by a double click on the desktop icon.

Licensing of the full version

After the first installation of the Carrera track planner from www.autorennbahnplaner.de the application will start in trial mode which is limited to 20 parts only.

After the program start you will see the entry dialog for the license key.

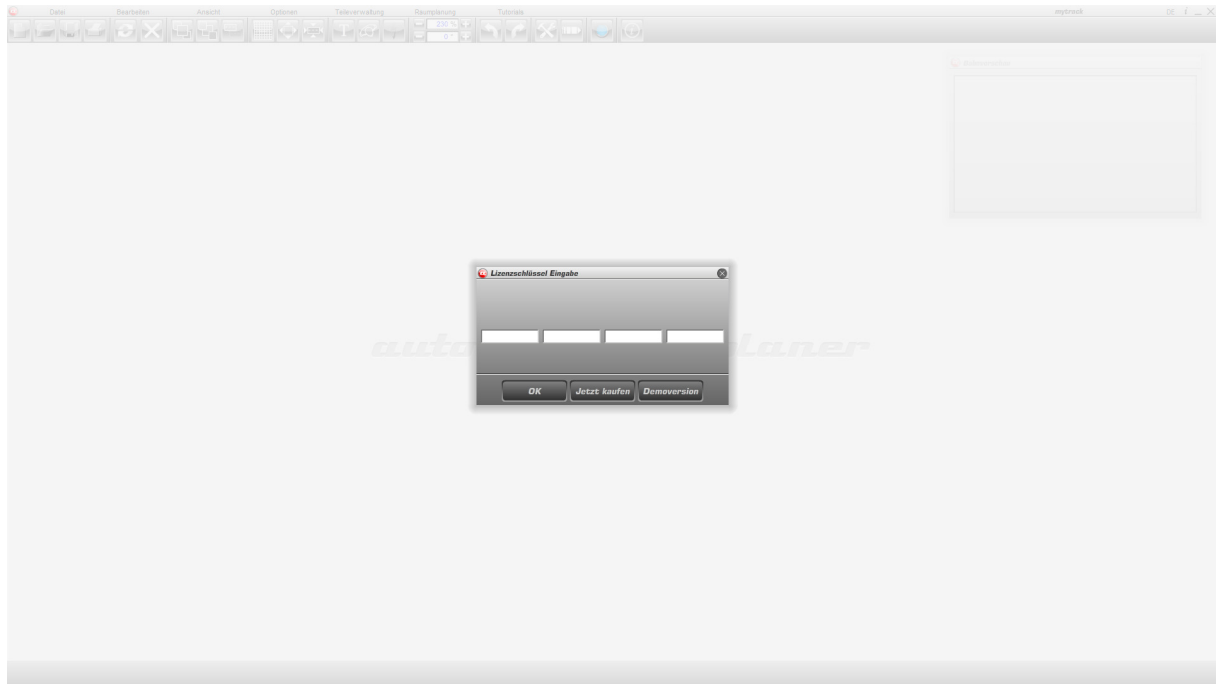


Diagram 2: Dialog license key

In order to use the trial version you will have to press the button “Trial version” on the right.

With the “buy now” button you can jump to the online shop of autorennbahnplaner.de and buy your personal license key.

After entering your personal license key the limitation of 20 parts from the trial mode is removed and the full version is available. For all following starts the entry dialog for the license key will no longer be shown.

Note:

You will have to enter your personal license key within 3 days after receiving.

After this period it becomes invalid and has to be re-requested (re-requests are free of charge for registered users).

Expired licenses keys can be re-requested at: service@autorennbahnplaner.de

Updates can be installed over the existing installation of a previous patch or release.